

**LaDiva<sup>®</sup>**

Arylex<sup>™</sup> active

**HERBICIDE**

# Tackle weeds on your terms

## **LaDiva<sup>®</sup> is a new, post-emergence herbicide for oilseed rape which:**

- Allows you to wait for your crop to establish.
- Controls broad-leaved weeds early, from 15th August.
- Is fast-acting on key broad-leaved weeds, including mayweeds, poppy, shepherd's purse, chickweed, cleavers and many more.
- Gives you greater flexibility in your programme.

## **When to use LaDiva**

- Application can begin from 15th August on early-drilled crops with fast-emerging broad-leaved weeds.

- It is an alternative to pre-emergence herbicides when application has not been possible or is not desired, as you can wait for the crop to establish to help reduce establishment risks.
- Controls larger and a wider range of broad-leaved weeds than many pre-emergence options.
- Offers effective control of emerged mayweed, chickweed and field pansy.
- Provides robust control of many key competitive weed species, including cleavers, cranesbill, poppy, fumitory and shepherd's purse.
- Offers control of a wide range of label and off-label weeds. Contact Corteva for more information.
- Favourable following crop options.

## **LaDiva gives growers the option to control broad-leaved weeds early in the programme.**

### **RECOMMENDED APPLICATION TIMING:**

15th August – 30th September

RATE: 0.25L/ha



**GS 10**



**GS 12**



**GS 14**



**GS 16**

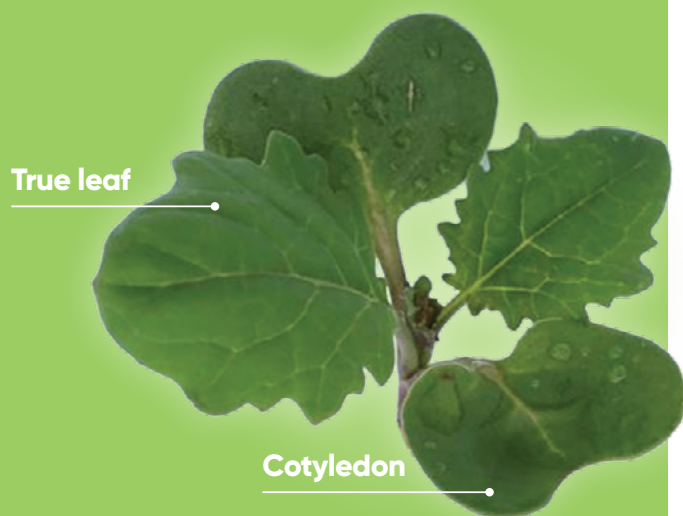


**GS 18**

## Ensuring the correct timing for early applications

When preparing to use LaDiva, you should properly assess the development phase of oilseed rape and apply from 2 true leaves of the crop (GS 12).

In case of uneven emergence of oilseed rape, wait until 90% of the crop is at least GS 12.

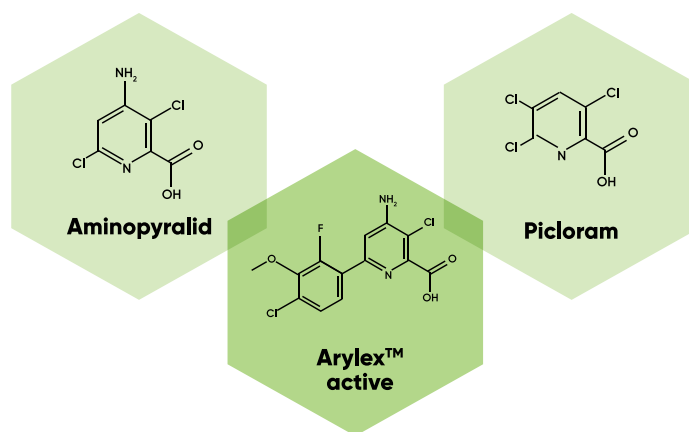


GS 12 = two fully developed true leaves.

## A completely new herbicide solution for post-emergence control of broad-leaved weeds in oilseed rape

In response to increasing pressure from certain key broad-leaved weeds, as well as the growing interest in post-emergence herbicides for oilseed rape, Corteva Agriscience is introducing a completely new solution: LaDiva, a herbicide based on the innovative, biologically active substance Arylex™ active.

LaDiva is a unique combination of 3 active substances from the group of synthetic auxins (group 4 according to HRAC) in one product:



## How LaDiva fits into herbicide programmes

**LaDiva®**

Arylex™ active

HERBICIDE

**Kerb® FLO 500**

HERBICIDE

**Belkar®**

Arylex™ active

HERBICIDE

### RECOMMENDED APPLICATION TIMING:

15th August – end September  
RATE: 0.25L/ha

Follow Kerb Flo 500 +/-  
Belkar (0.25L/ha)





## LaDiva gives control of a wide range of broad-leaved weeds

**S – 0.25L/ha**  
(S – 85% +)

Cleavers	Actively growing up to 2cm in height/diameter
Cut-leaved cranesbill	Up to 8 true leaves
Small flowered cranesbill	Up to 6 true leaves
Dove's foot cranesbill	Up to 5 true leaves
Poppy	Up to 9 true leaves
Scented mayweed	Up to 9 true leaves
Scentless mayweed	Up to 8 true leaves
Red dead-nettle	Up to 8 true leaves
Fumitory	Up to 8 true leaves
Flixweed	Up to 4 true leaves



**MS – 0.25L/ha**  
(MS – 70–84.9%)

Common chickweed	Up to 1st side shoot
Field pansy	Up to 6 true leaves
Shepherd's purse	Up to 6 true leaves



## Visible instant activity on weeds



**Common fumitory**  
1 day after application



**Small cranesbill**  
2 days after application



**Field pennycress**  
7 days after application



**Mayweed**  
7 days after application

For further information,  
visit: [www.corteva.co.uk/ladiva](http://www.corteva.co.uk/ladiva)